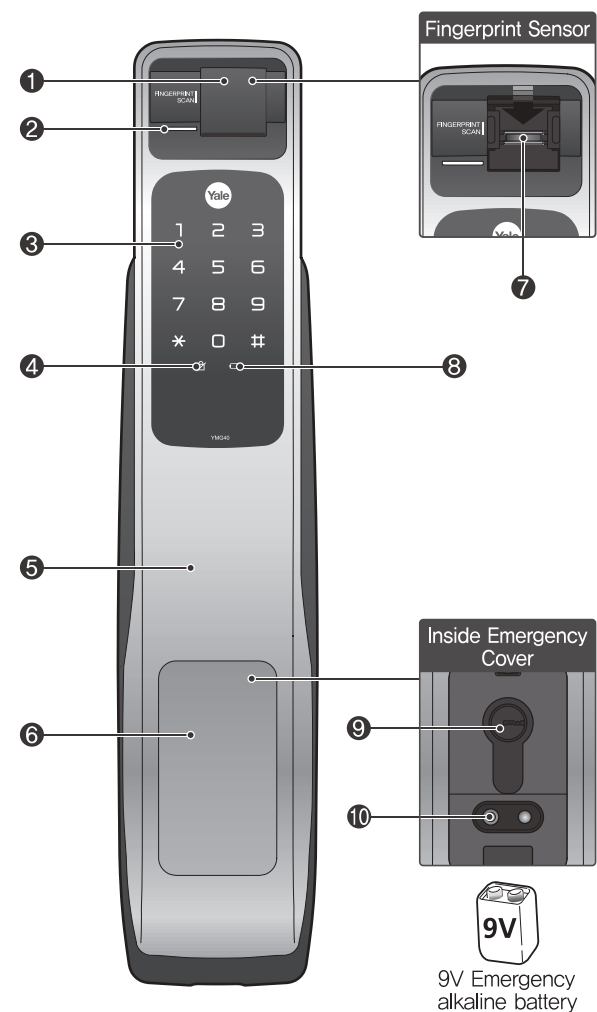
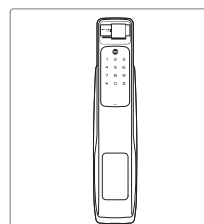


1. Front Body (Front Body, installation on the outside of the door)

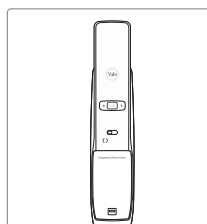


2. Basic Contents

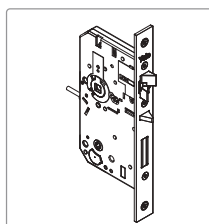
Basic Contents



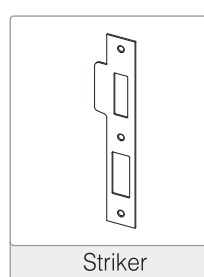
Front Body



Main Body



Lock Case



Striker

- User Guide
- Install Guide
- 4AA Batteries
- Screws

Optional Accessories

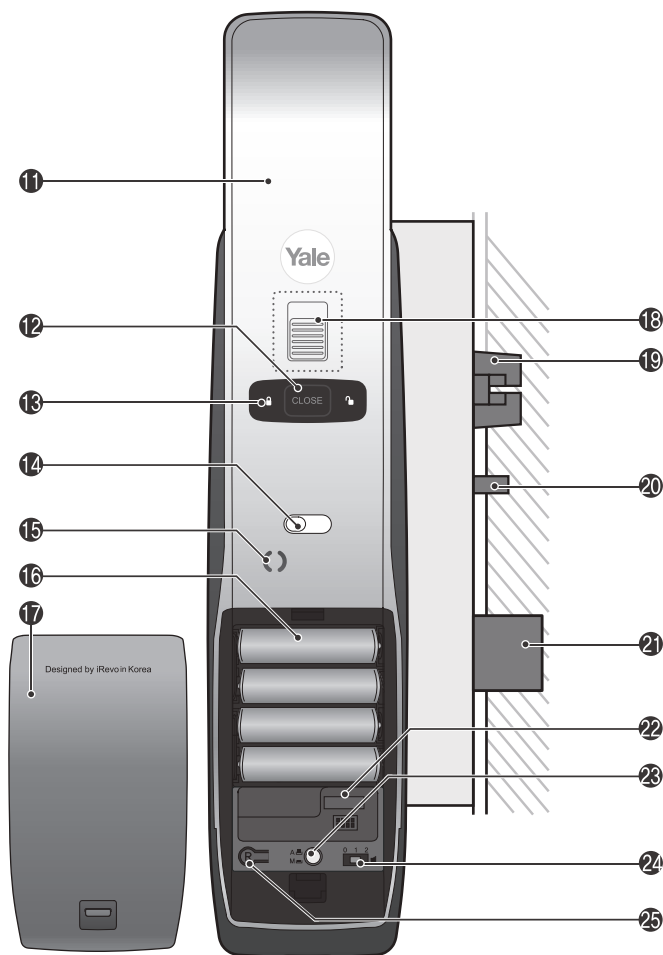
- Remote Controller
- Remote Control Module
- Bluetooth Module

3. Specifications

Parts	Specifications	Remarks
Front Body	67.6(D) X 76(W) X 359.1(H) mm	Operating temperature: -15~55°C (5~131°F)
Main Body	65.2(D) X 76(W) X 359.1(H) mm	
User Code/Fingerprint	30 different User Codes / 20 different Fingerprints	
Lever	Aluminum die-casting	
Battery	4EA 1.5V AA Alkaline batteries(Operating voltage: 4.5~6V)	
Option Remote Control	Wireless	Optional

- ※ Battery life may vary depending on temperature, moisture levels, frequency of use and the quality of the batteries.
- ※ Please make sure that all parts are included when purchasing the product.
- ※ Optional products may not be available depending on your country or local dealer.

4. Main Body (Main Body, installation on the inside of the door)



5. Front Body

1	Fingerprint Cover	2	Fingerprint Lamp
3	Keypad(10-key)	4	Dead Bolt Jam Lamp
5	Push Pull-Bar	6	Emergency Cover
7	Fingerprint Sensor	8	Battery Change Lamp
9	Emergency Keyhole	10	Emergency Power Supply Terminal

6. Main Body

11	Push Pull-Bar	12	Close Button
13	Locking status Lamp	14	Internal Forced Lock Switch
15	Speaker	16	1.5V AA Alkaline Batteries
17	Battery Cover	18	Safe Switch
19	Double swing latch bolt	20	Automatic Locking Sensor
21	Dead Bolt	22	Slot for Remote Control module
23	Automatic/Manual Lock button	24	Volume Control Switch
25	Registration Button		

7. Setting Menu

	Touch the Keypad of the Front Body with your palm to begin.
	Press button on the Keypad.
	Press button on the Keypad.
	Press (Registration) button in every steps to start or complete the session.
	Enter User Fingerprint. (Up to 20EA)
	Enter User Code. (4 ~ 10 digits) The User code is used for unlocking the lock. (Up to 30: in case of advanced mode)
	Enter Master Code. (4 ~ 10 digits) The Master code is managed by certain person who is in charge of controlling the lock, and used for setting up the features.
	Enter Visitor Code. (Only 4 digits) The Visitor code is different from user code and given out to visitors only.
	Enter Onetime Code. (Only 4 digits) The Onetime code is used only once for unlocking the door lock and automatically deleted after usage.
	User Slot Number should be 2 digits. (like '01', '02' ...) When registering group of users in advanced mode, the User Slot Number is used to variate individuals and offer private pin codes.
	Rotation area to add more features.

8. Product Features

Normal Mode
Without a designated person, anyone who knows 'User PIN Code' has authority to set features.

Master Mode
Only a designated person who knows 'Master PIN Code' has authority to set features.

Safe Switch
To prevent from break-in and unexpected release of the door lock from inside.

Smart Etiquette
To enter pin codes on the keypad and open the door lock in silent mode.

Network Module Setting (*Optional)
This setting becomes available through the Main Menu (9) and allows the lock to connect with the Controllers.

Bluetooth Pack (*Optional)
After inserting the Bluetooth Pack, user could lock and unlock the door by using smart phone.

9. Quick Menu (Normal Mode)

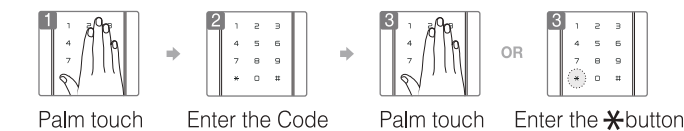
Without a designated person, anyone who knows 'User PIN Code' has authority to set features.

User Code	* Continue / (R) Complete											
	1	2	3	4	5	6	7	8	9	10	11	12
Registr-ation												
Fingerprint	Up to 20EA											
Registr-ation					OR							
Visitor Code												
Registr-ation										OR		
Delete								OR				
Onetime Code	Auto delete after using.											
Registr-ation										OR		
Delete								OR				
Delete All Fingerprint												
Delete								OR				
DoorLock Setting												
Change Mode												
Language Setting							1 English			OR		
							2 Spanish			OR		
							3 Portuguese			OR		
							4 Chinese			OR		

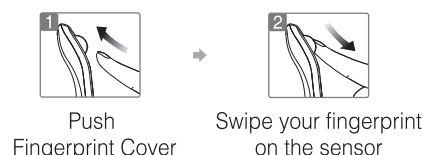
※ When changing from Normal to Master mode, all of the previously registered PIN codes and other credential will be automatically deleted.

Remote Controller												
Registr-ation							SET Button			OR		
Delete								OR				Remote set button
Controller												
Registr-ation							Cont roller			OR		
Delete								OR				

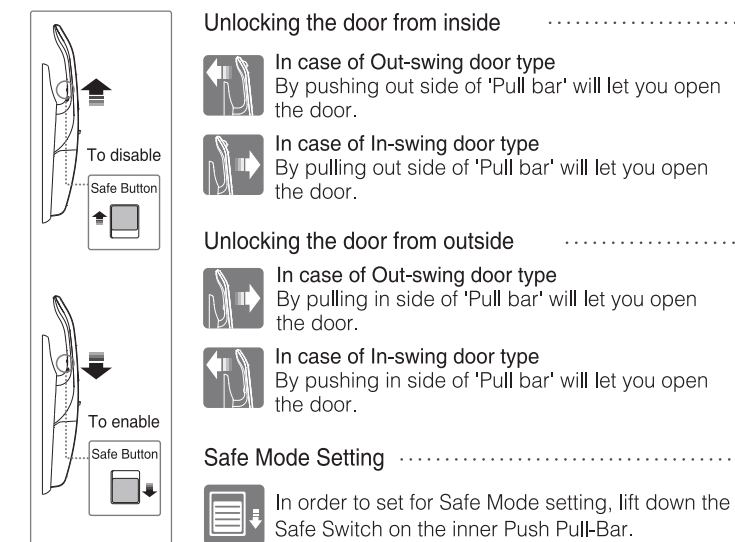
10. Unlocking Door with Code



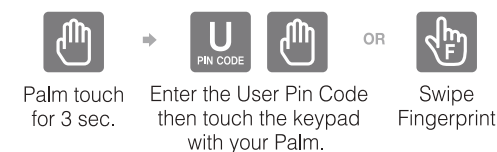
11. Unlocking Door with Fingerprint



12. Unlocking the door from inside / outside



13. Unlocking Door with Smart Etiquette.



14. Locking the door

Automatic Lock Mode (Default)

5 sec The door will be automatically locked within 5 seconds.

Locking the door from inside when the lock is set on manual locking mode.

By pressing the Automatic/Manual Lock button from Main Body, the door lock will be set for Automatic Lock Mode, and the door will be closed automatically.

Locking the door from outside when the lock is set on manual locking mode.

The door locks when touching the Keypad with the palm.

15. Automatic / Manual Lock

Automatic Lock

When the door lock is set on Automatic Lock mode, it will be locked automatically.

Manual Lock

When the door lock is set on Manual Lock mode, it should be operated manually.

